

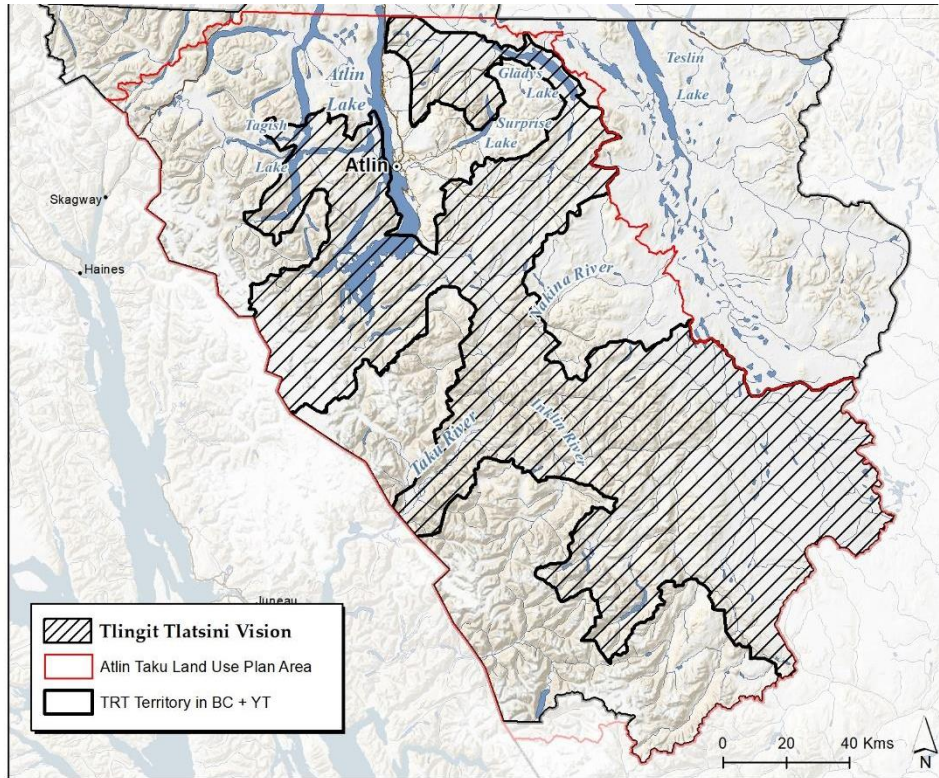


Tlatsini: Places that Make Us Strong

Our Tlatsini Vision identifies the places that we need to protect for the health of our lands, waters, fish and wildlife and to maintain Tlingit *kusteeyi* (way of life) for generations to come. Our Tlatsini map was developed with our community and Elders based on generations of knowledge and decades of research. It was publicly released in 2009 and used as the basis for negotiating the Atlin Taku Land Use Plan.

*“Protection of Tlatsini lands is necessary to ensure Tlingit *Khustiyxh*— Way of Life, while providing for opportunities for ourselves, as well as, others who pursue the land-based life we all value in the Atlin-Taku region. ... Within the Tlatsini lands, our intent is to maintain functioning ecosystems over large connected landscapes necessary to sustain effective wildlife and fisheries populations that are so vital to our health and cultural wellbeing.” - 2009 Tlatsini Vision*

Tlatsini reminds us that our lands and our way of life are inherently interdependent. As the stewards of our traditional territory, it is our collective responsibility to ensure that we look after our land so our land can look after us.



Tlatsini Vision Map, 2009

Tlatsini Indigenous Protected and Conserved Areas (TIPCA)

In 2019, our Nation returned to our Tlatsini Vision to continue the effort to protect our lands and waters and to strengthen our governance. The Tlatsini Indigenous Protected and Conserved Areas (TIPCA) is the evolution of our Tlatsini land protection path. The new name is used to reflect the indigenous-led approach to conservation that has gained momentum across the country as a way for First Nations to ensure that land protection meets our needs. While the name is new, the work is the same decades-long effort to protect our Tlatsini lands and waters.

During the first year of TIPCA, we met monthly with our Elders to ask for their guidance and we hope to be able to meet regularly with Elders as the Tlatsini work moves forward. We have held over 20 community meetings and events over the last six years to share updates and get feedback on TIPCA and the T'akú IPCA work, led by Caitlin O'Shea, Shauna Yeomans and the late Nicole Gordon. We have also met regularly with leadership.

The direction we were given was clear: focus first on achieving our Tlatsini Vision for the Taku watershed to conserve our salmon and the Tlatsini landscapes in our watershed.

How We are Advancing our Tlatsini Vision today

The Clan Leaders and Clan Directors Council (CDC) made the T'akú Tlatsini Indigenous Protected and Conserved Area declaration public in January 2023 (go to www.trtfn.com/tipca). You may have attended one or more of the many community meetings or Elder's meeting that our Lands and TIPCA team organized before and since this important milestone.

Tlingit law affirms our responsibility to protect and care for the T'akú and all that live and thrive there, and through reciprocity, the T'akú supports us as healthy Tlingit, today and forever into the future. We are strong partly because our lands and waters depend upon us; stewarding our lands and waters is an essential part of being Tlingit and of Lingít Kusteeyí (Tlingit way of living).

T'akú Tlatsini IPCA Declaration

Since we publicly declared our Tlatsini Vision for the Taku as the T'akú IPCA, the government of British Columbia (BC) has engaged in constructive discussions with TRTFN about meeting our protection and stewardship requirements for the Taku watershed. The work has been slow, but we are making progress. Last summer, the BC government and TRTFN signed the Tlatsini Process Agreement. This agreement commits the BC government to work with TRTFN on land use planning, including to agree on approaches to implement the Taku Indigenous Protected and Conserved Area (T'akú IPCA)! This is a great milestone but there are many remaining hurdles and much work to do, with the ambitious goal of having recommendations for decision-makers in both governments to consider in the spring of 2026.

Part of this work includes working with other First Nations, including Tahltan First Nation. BC requires the Tahltan to agree before enacting new protections in the southern portion of the Taku. Early indications suggest a shared interest in protection in the southern Taku watershed but much work and discussions are needed on a Nation-to-Nation level to see if we can agree on protection.

CDC will continue to guide the work ahead, as will you. Eventually, we hope that TRTFN and BC can co-develop a set of recommendations that will be brought to a Joint Clan Meeting (JCM) and also presented to Cabinet for a decision by the BC Government. The two governments will each make their own decisions on the recommendation package that will include new protections and governance arrangements for the Taku and potentially other important Tlatsini lands.

The current planning work with BC is also an opportunity to address key TRTFN land use issues north of the Taku within BC. We need to understand what your concerns are in our northern BC

territory, and we will be asking you to help us understand your concerns and interests over the next couple months. Any recommendations from this work would also come to the JCM for decision at the same time as the Taku package comes forward.

You are invited to join us for two TIPCA Gatherings

We can not do this work without you. Each step of our journey toward Tlingit sovereignty has been guided by the community, our Elders, and Tlingit law.

We will be showing our new TIPCA video that highlights many TRTFN citizens speaking to the importance of our Tlatsini lands! Please mark your calendars to join us, have some snacks and enjoy the video!

Date: March 9, 2025

Time: 2 pm – 3:30 pm MST

Location: Atlin, place to be determined

We are planning a community dinner and discussion on March 10, 2025. This will be an opportunity to provide more detailed information to you on the TIPCA work and receive your feedback. Please mark your calendars to join us for dinner and discussions!

Date: March 10, 2025

Time: 4 pm – 7pm MST

Location: Atlin Recreation Centre

For more information on the the Tlatsini Indigenous Protected and Conservation Areas (TIPCA) Initiative, please feel free to contact us:

Caitlin O'Shea – Tlatsini Initiative Coordinator

Text or Call : 867-335-6458; Email: c.oshea.913@gmail.com

Rodger Thorlakson – Lands and Resources Manager

Call: 250-651-7900, ext 204; Email: lands.mgr@gov.trtfn.com

