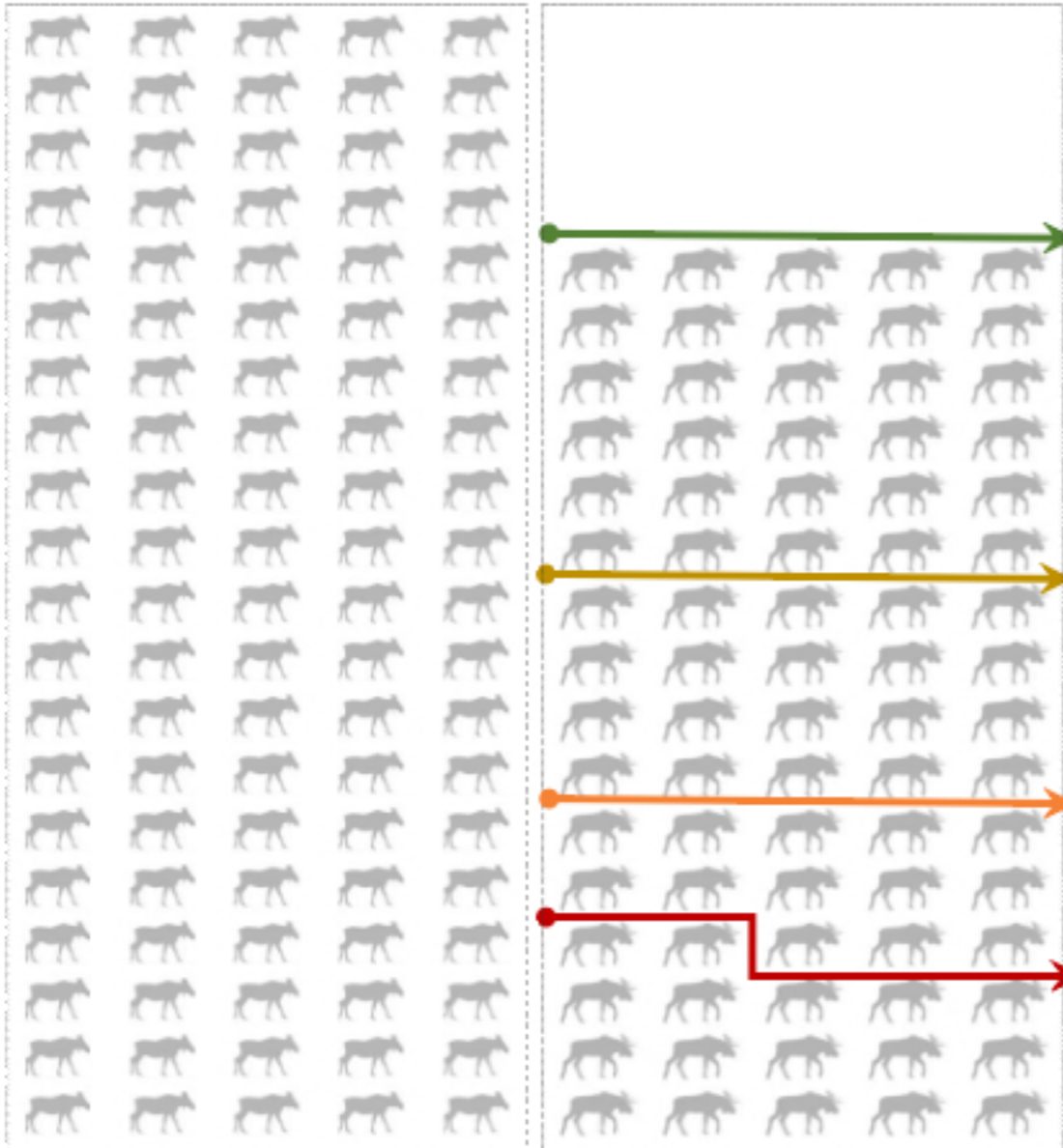


Bull moose have declined in Atlin East

Bull to Cow Ratios

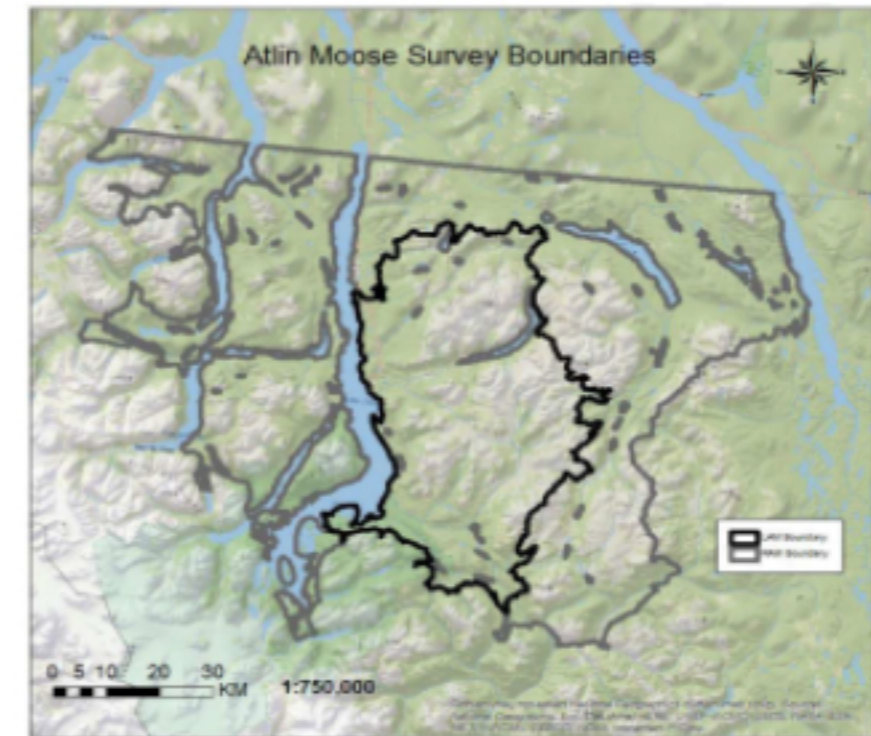


Unharvested moose populations have about 80 bulls per 100 cows

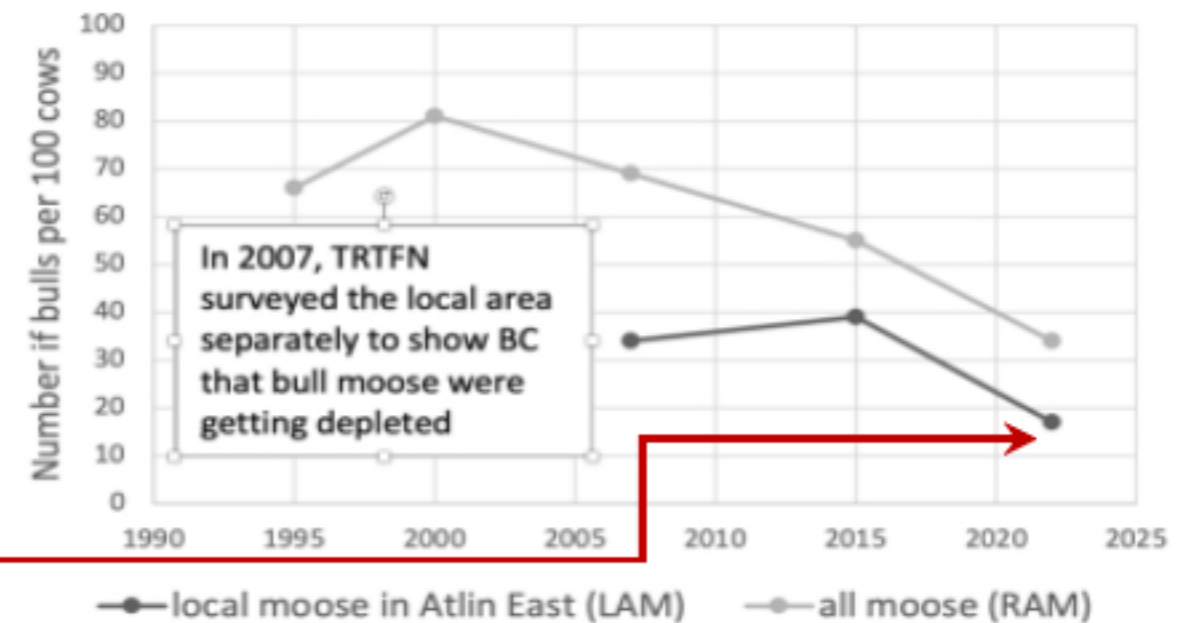
The BC moose management guideline for low-density moose populations is 50 bulls per 100 cows

Cow pregnancy rates can decline at 30 bulls per 100 cows

In January 2022, the local Atlin East moose population had 17 bulls per 100 cows



BC and TRTFN have surveyed the Atlin moose population since 1995



Low bull to cow ratios indicate overharvest. Some consequences can be:

- Reduced ability for the population to “bounce back” and replenish
- Reduced food security for subsistence hunters
- Hunts require more time, effort, distance, fuel, etc.
- Increased hunting regulations must be applied to address conservation and subsistence issues