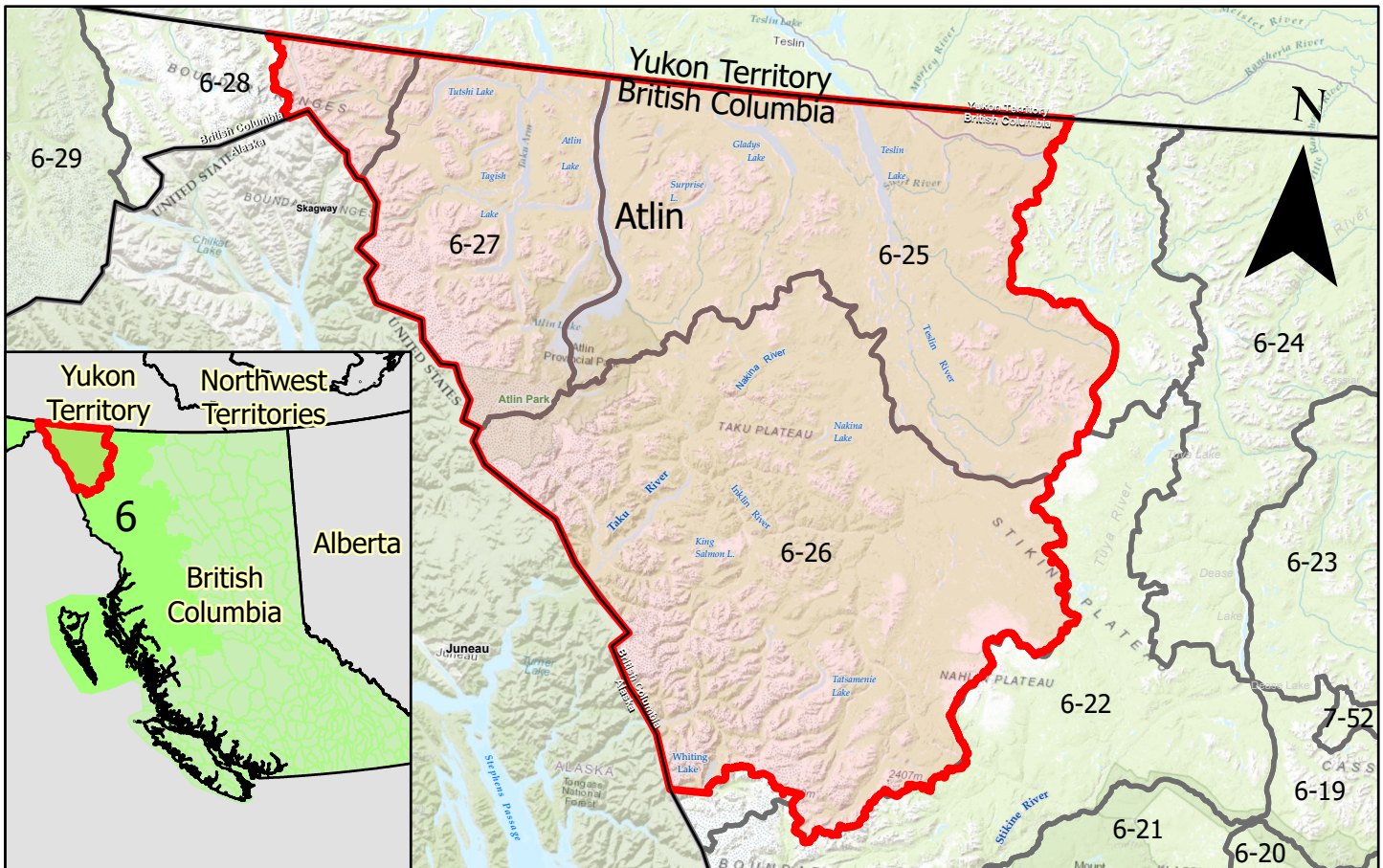


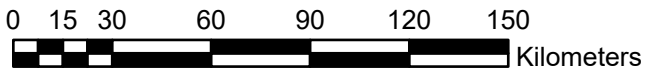


# Notice to Hunters in TRTFN Traditional Territory



-  TRTFN Traditional Territory
-  BC Wildlife Management Units



Taku River First Nation (TRTFN) is in a State of Emergency due to the Covid-19 pandemic. TRTFN has declared a hunting restriction in TRTFN Traditional Territory. Harvest in TRTFN Traditional Territory will be restricted to TRTFN citizens and local Atlin residents only. All other harvest is deemed non-essential.

TRTFN is not closing resident hunting opportunities, TRTFN is enforcing local measures tied to Covid-19. TRTFN advises that hunters and recreationists stay local or check with other First Nations about travelling in their traditional territory. The map above shows TRTFN Traditional Territory where Covid-19 closures are in place to non-local recreationists. These are part of broader recreational restrictions in TRTFN territory.

For Questions and Contact:

Phone: +1 250-651-7900  
Email: [trtfn@gov.trtfn.com](mailto:trtfn@gov.trtfn.com)



**TAKU RIVER TLINGIT  
FIRST NATION**

